

# ET-126HF *Electrodynamic Transducer*

## GENERAL DESCRIPTION

The Labworks ET-126HF Electrodynamic Transducer is a portable shaker that is ideally suited for all types of general vibration testing. Its small size and weight make it ideal for use in research and investigative testing. Specifically constructed for high frequency operation, the ET-126HF can operate up to 18 KHz with light loads

The shaker has a large 2.125 inch diameter table with multiple attachment points and up to 25 pounds force capability to ease fixture requirements in production as well as unique test applications. The 0.5 inch stroke of the ET-126HF, usually available only in larger shakers, facilitates modal testing of resonant structures.

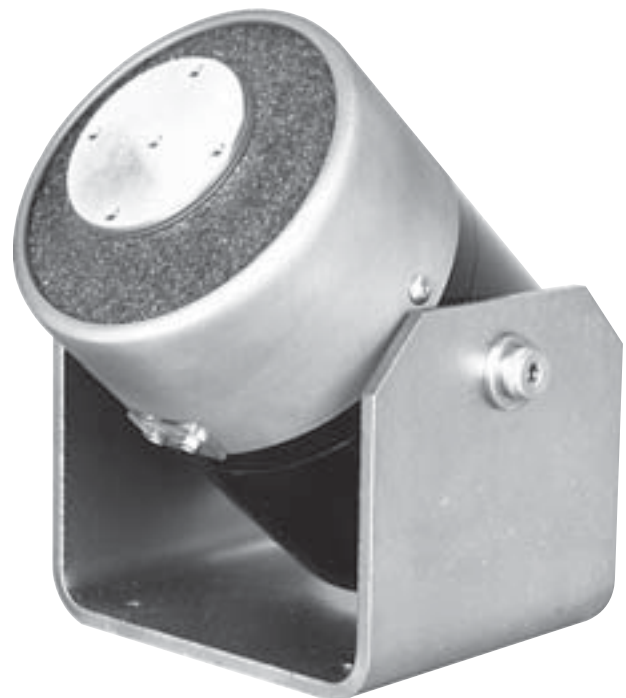
The rugged, damped dual flexure armature suspension system offers the high axial compliance and lateral stiffness needed for testing unsupported test loads with minimum suspension related noise problems.



- 25 POUNDS PK SINE FORCE
- .50 INCH STROKE
- 2.125 INCH DIAMETER TABLE
- 70g ACCELERATION, BARE TABLE
- TRUNNION MOUNTING BASE

**Labworks Inc.**

2950 airway ave., a-16  
costa mesa, ca 92626  
(714) 549-1981  
fax (714) 549-8041  
info@Labworks-inc.com  
www.Labworks-inc.com



# STANDARD FEATURES

- AIR COOLED
- PERMANENT MAGNET DESIGN
- HIGH FREQUENCY OPERATION



2950 airway ave., a-16  
 costa mesa, ca 92626  
 (714) 549-1981  
 fax (714) 549-8041  
 info@Labworks-inc.com  
 www.Labworks-inc.com

## ET-126HF SPECIFICATIONS<sup>1</sup>

### PERFORMANCE

Sine force	
Natural cooling	13 lbf pk
With blower	25 lbf pk
Random force	
Natural cooling	8 lbf rms
With blower	17.5 lbf rms
Shock force	
	53 lbf pk, 50 msec
Max displacement	
Continuous pk-pk	.50 in
Between stops	.50 in
Maximum velocity	
	120 ips pk
Acceleration <sup>1,2</sup>	
Bare table	70 g pk
.5 lb load	30 g pk
2 lb load	11 g pk
Maximum acceleration	
Resonant	150 g pk
Peak shock	175 g pk

<sup>1</sup> Please see systems ratings for additional specifications.

<sup>2</sup> Load dependent.

Specifications subject to change. Consult factory for latest specifications.

### PHYSICAL

Armature weight	0.35 lb
Suspension stiffness	15 lb/in
Rated armature current	
Natural cooling	9 A rms
With blower	17 A rms
Frequency range <sup>2</sup>	
	DC-14,000 Hz (Usable to 20,000)
Fundamental resonance <sup>2</sup>	
	11,500-12,500 Hz
Stray magnetic field	
Measured 1.0" above table	<15 gauss
Measured .5" from body	<15 gauss
Cooling	80 CFM/22 in H <sub>2</sub> O
Dimensions	6.5" H x 4.8" W x 4.25" D
Shaker weight	11 lbs

### OPTIONS

- Cooling blower: Required for operation above 13 lbf. Recommended for continuous operation above 10 lbf pk.
- Vibration isolation mounts.
- Modal stingers and mounts.

